

AN IDENTIFICATION STRATEGY – WHAT IS IT?



Christian Hay
Partner

Medinorma 2.0
Bern, March 30, 2016

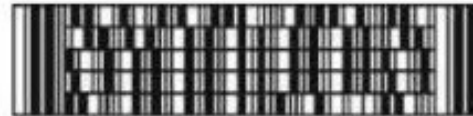
DO YOU ALREADY READ BARCODES? FOR WHAT?

OCR-A
1234ABCD
Alphanumeric
(+4 currency char.)

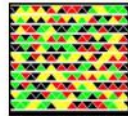
OCR-B
1 2 3 4 A B C D
Alphanumeric
(+4 currency char.)

MICR E-13B
1 2 3 4 5 6 7 8 9 0
Numeric
(+4 special char.)

SEMI M12
1234ABCD
Alphanumeric
(+4 currency char.)



8 color barcode storing 84 RAW bytes



4 color barcode storing 50 RAW bytes



Definition: identification

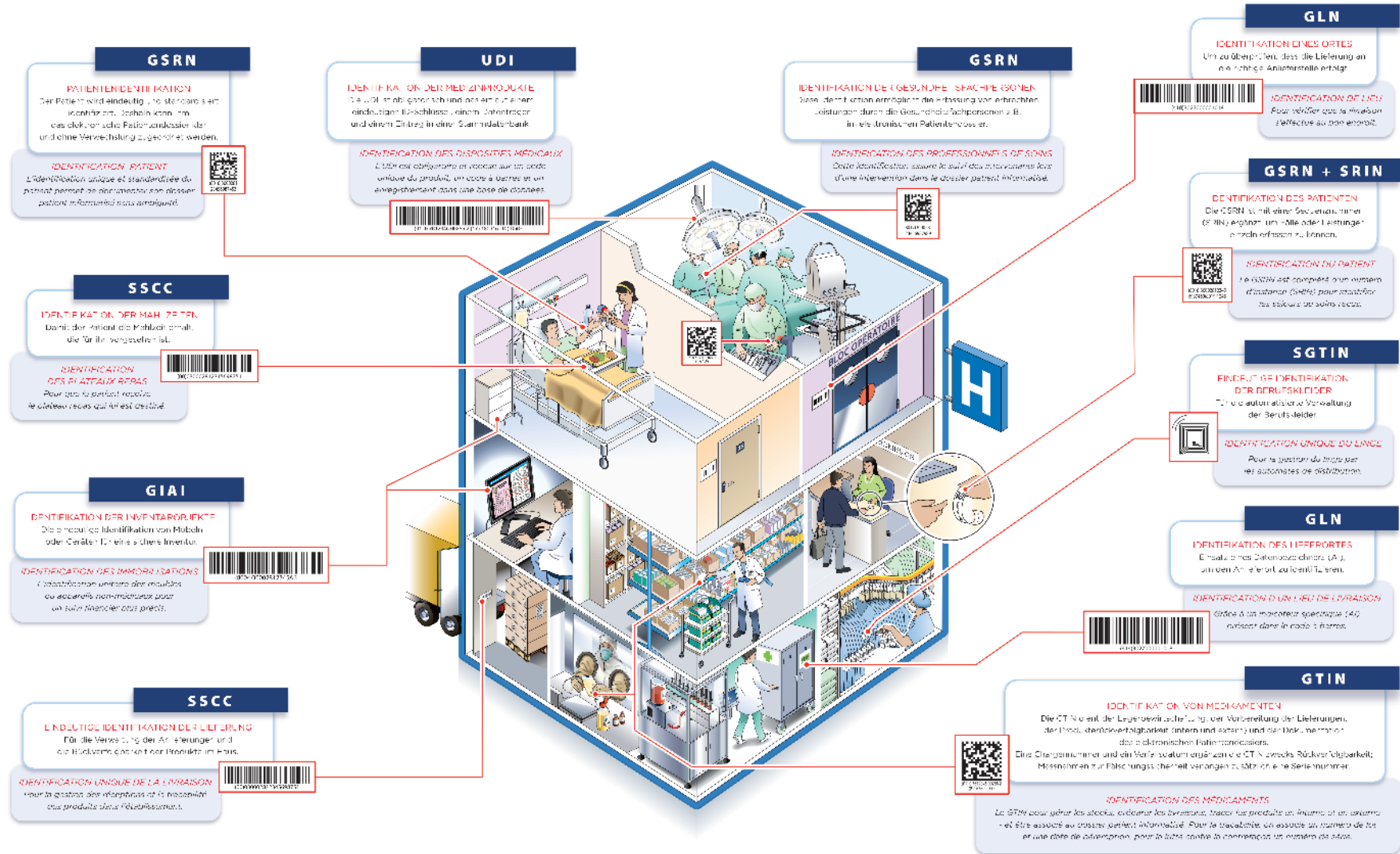
- The action or process of identifying someone or something or the fact of being identified.
- Act of finding out who someone is or what something is
- *En informatique, moyen de « connaître » l'identité d'une entité, souvent à l'aide d'un identifiant. À ne pas confondre avec le contrôle d'identité (ou authentification) qui permet de vérifier cette identité*
- in Datenbanken und Dokumentations Sprachen die Vergabe eines Kennzeichens

A list of what is to be identified in Healthcare

- *Products (devices, medicinal products, etc.)*
- *Locations, functional roles (e.g. department)*
- *Deliveries*
- *Assets (pain pumps, transport cases,...)*
- *Meals*
- *Patients (patient or case?)*
- *Caregiver*
- *Lab. samples*
- *....*

GS1 Standards im Spital : Rückverfolgbarkeit und Patientensicherheit

Standards GS1 à l'hôpital : traçabilité et sécurité des patients



MEDICAL DEVICES: A HEADACHE?

HOW TO EVALUATE BARCODE READINESS?

Slides provides by J. Pomroy, Portsmouth Hospitals NHS Trust, 2016

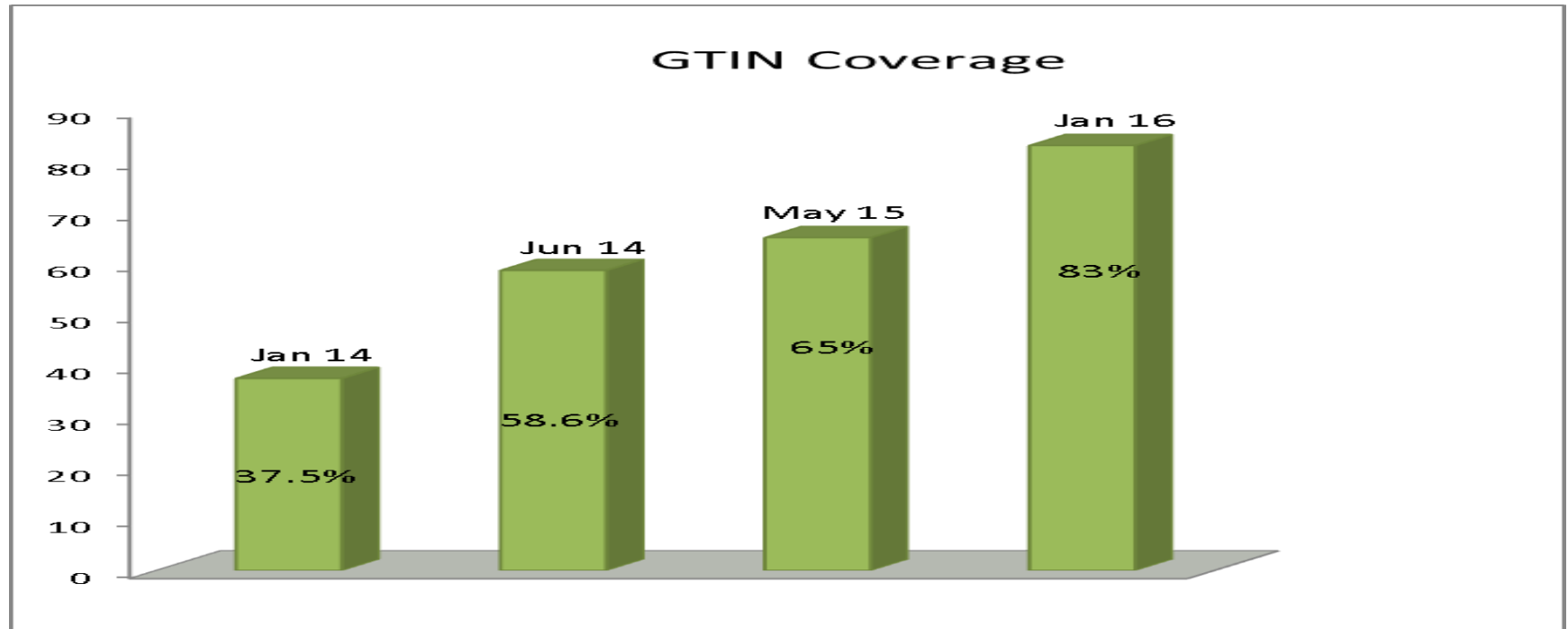
Supplier Readiness 2013



ABBOTT VASCULAR
AMBU LTD
APPLIED MEDICAL UK LTD
ARTHREX LTD
ARTHROCARE UK LTD
ASTRA TECH LTD
BAXTER HEALTHCARE LTD
BIOMET UK LTD
BOSTON SCIENTIFIC LTD
BUNZYL HEALTHCARE
COOK UK LTD
COVIDIEN (UK) COMMERCIAL LTD
GE HEALTHCARE CLINICAL SYSTEMS (UK) LTD
HUNTLEIGH HEALTHCARE LTD
INTERSURGICAL LTD
JOHNSON & JOHNSON MEDICAL LTD
KIMAL PLC
LINA MEDICAL UK LTD
3M HEALTH CARE LTD
MEDARTIS LTD
MEDTRONIC LTD
MOVIANO UK LTD
OLYMPUS KEYMED
SMITH & NEPHEW HEALTHCARE
ST JUDE MEDICAL UK LTD
STRYKER UK LTD
SYNTHES LTD
TELEFLEX MEDICAL
TIMESCO OF LONDON LTD



Positive direction- not quick enough.

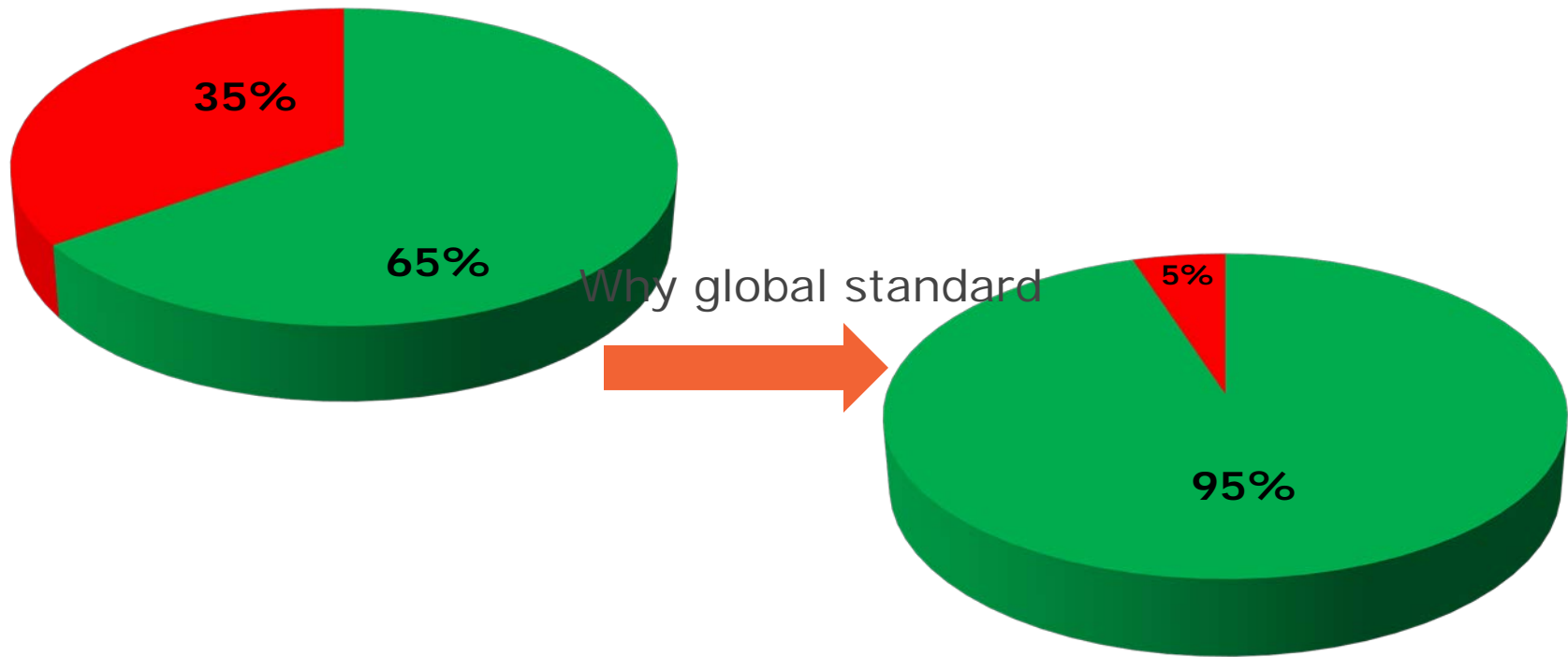




Supplier Engagement Program 2015/16



Contract Coverage



**AGENCE GENERALE DES EQUIPEMENTS
ET PRODUITS DE SANTE**

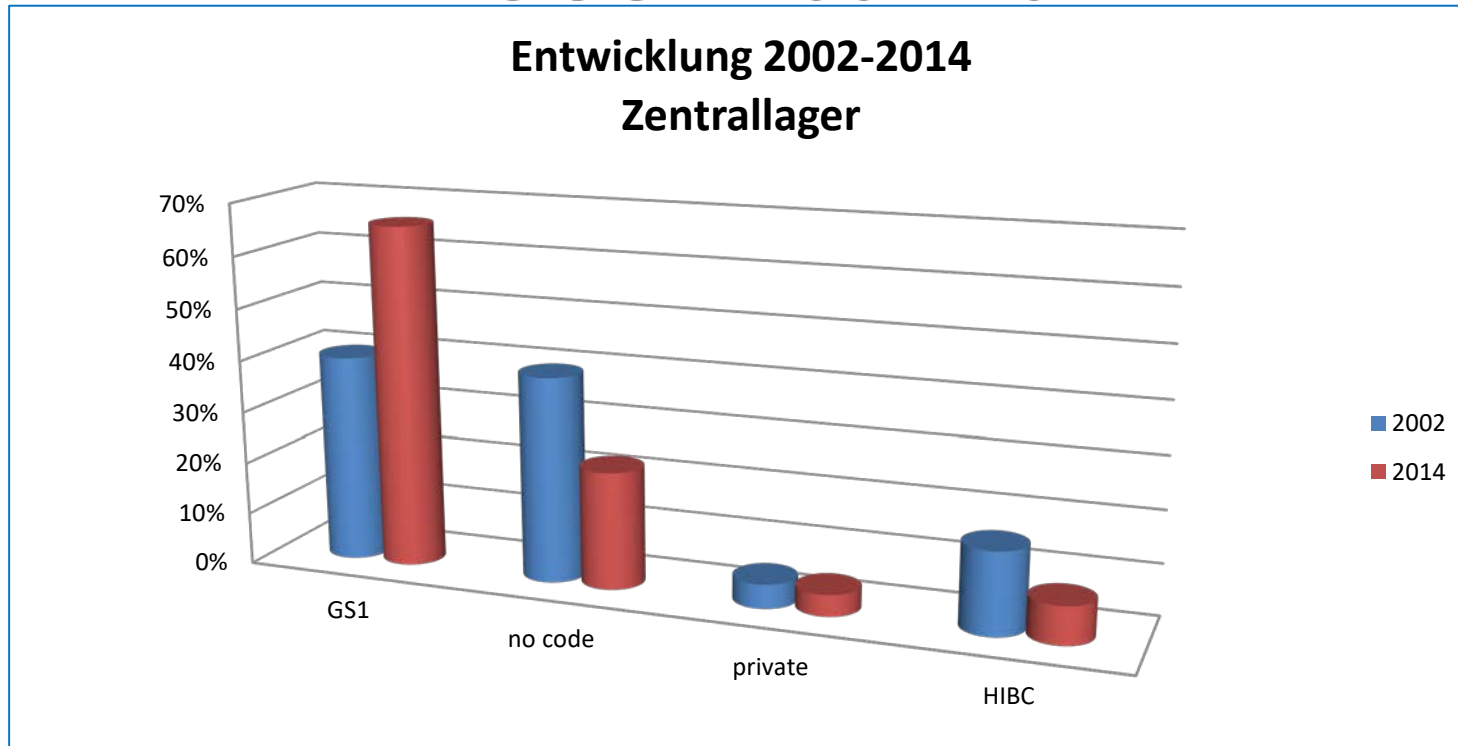
Paris, Mars 2017

Lors de la séance d'ouverture des plis en date du 13 mars 2017, le représentant du Pouvoir Adjudicateur a examiné les offres relatives à la procédure citée en objet.

Lors de l'analyse de votre offre il a été décidé, conformément à l'article 59.II du décret relatif aux marchés publics, de vous demander de nous préciser si votre société est en mesure de fournir à compter du 1^{er} juillet 2017 (date prévue de début des marchés) **un système de traçabilité individuelle de l'instrument (T2I)** :

1. selon les standards de **codification GS1**, de **symbolisation DataMatrix** et de **gravage laser sur le corps de l'instrument**, et ce, **pour l'ensemble des instruments proposés dont les spécificités le permettent** (dimensions, forme, alliage, etc),
2. **obligatoirement** « de série » ou « en routine » pour tous les établissements de l'APHP, **sans que cela nécessite une demande complémentaire à la commande** ; il est rappelé que **cette prestation ne peut en aucun cas être assimilée à une prestation de gravage DataMatrix GS1 « à la demande »** comme c'est le cas pour le gravage alphanumérique.

IDENTIFICATIONS IN CENTRAL WAREHOUSE 2002-2014



Inventory secondary & tertiary packaging level; comparisons in % (100% in 2002 : N=742; in 2014 : N=1149) -central warehouse in one Swiss hospital.

What to do with inconsistent identification / absence of identification

- *Contact supplier*
- *Stick own labels (which identification?)*
- *Ignore*
- *When contacting supplier: provide test certificate for labelling mistakes?*

PATIENT IDENTIFICATION: IS ANY SOLUTION GOOD?

HOW TO APPLY PATIENT ID ON WRISTBAND?



How to choose between Patient ID and Case ID?

- ▶ *Patient ID is more stable*
- ▶ *All information could/should be retrieved with Patient ID*
- ▶ *Case ID is administrative*
- ▶ *Case ID changes along a single patient stay*
- ▶ *More than one Case ID can exist at the same time → scanning the wrong could lead to errors*

Patient or Case ID?

	Patient ID alone	Case ID alone	Both Patient and Case ID
Benefits	<ul style="list-style-type: none"> + Allows identification check + Information stable + Function does already exist in some IT components, ... 	<ul style="list-style-type: none"> + Easy to search or capture information in the IT components 	<ul style="list-style-type: none"> + All is possible!
Hurdles	<ul style="list-style-type: none"> - IT components or interfaces have to be adapted 	<ul style="list-style-type: none"> - Information may change: <ul style="list-style-type: none"> • reclassification • Outpatients who are moved into in-patients - IT components have to be adapted 	<ul style="list-style-type: none"> - Difficulties to implement: dedicated scanner by IT component, or increased technical complexity - Information may change

Purpose:

- 1) Security enhancement
- 2) Ease of implementation

Which «ID» to bring on the wristband? Use Cases

5 Use Cases:

- Case 1 double checking
- Case 2 triple checking
- Case 3 non-prescribed exam linkage
- Case 4 Task selection from a work list
- Case 5 Accessing patient's context

Use case

Case 1 : double checking

Objective:

- Double checking from an order (1) and a wristband
- Traceability of the verification

SEC*

FAC*

+++

+

Concerned specific tasks

information system

Patient ID

Case ID

Sign-in at Operating Room

software1

OK

OK

Transport staff to bring patient

Software 2

?

OK

Example Sign-in at Operating Room

Select order to be executed



- At arrival, care giver selects the surgical operation to be processed in the software and activate the time count

Wristband scan



- Care giver scans patient's wristband

Double check



- Software1 cross checks that ID on wristband and operation to be processed is the same
- Cross check is documented in the system

[1] Order: a type of planned operation in the IT system. Example: planned surgical act, prescription of an examination or a treatment

INTERNAL PRODUCTIONS @ PHARMACY: HOW TO...?

The good and the bad...

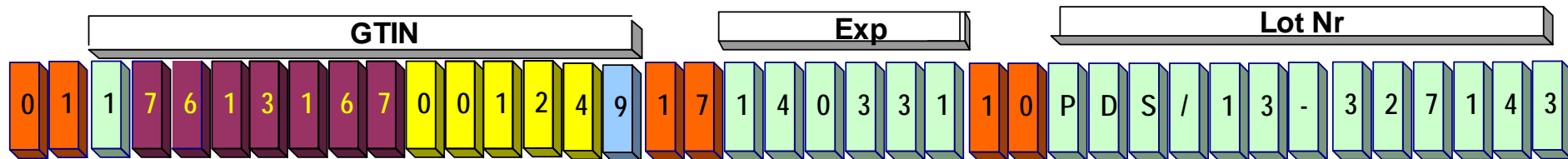


()~fc000.05C

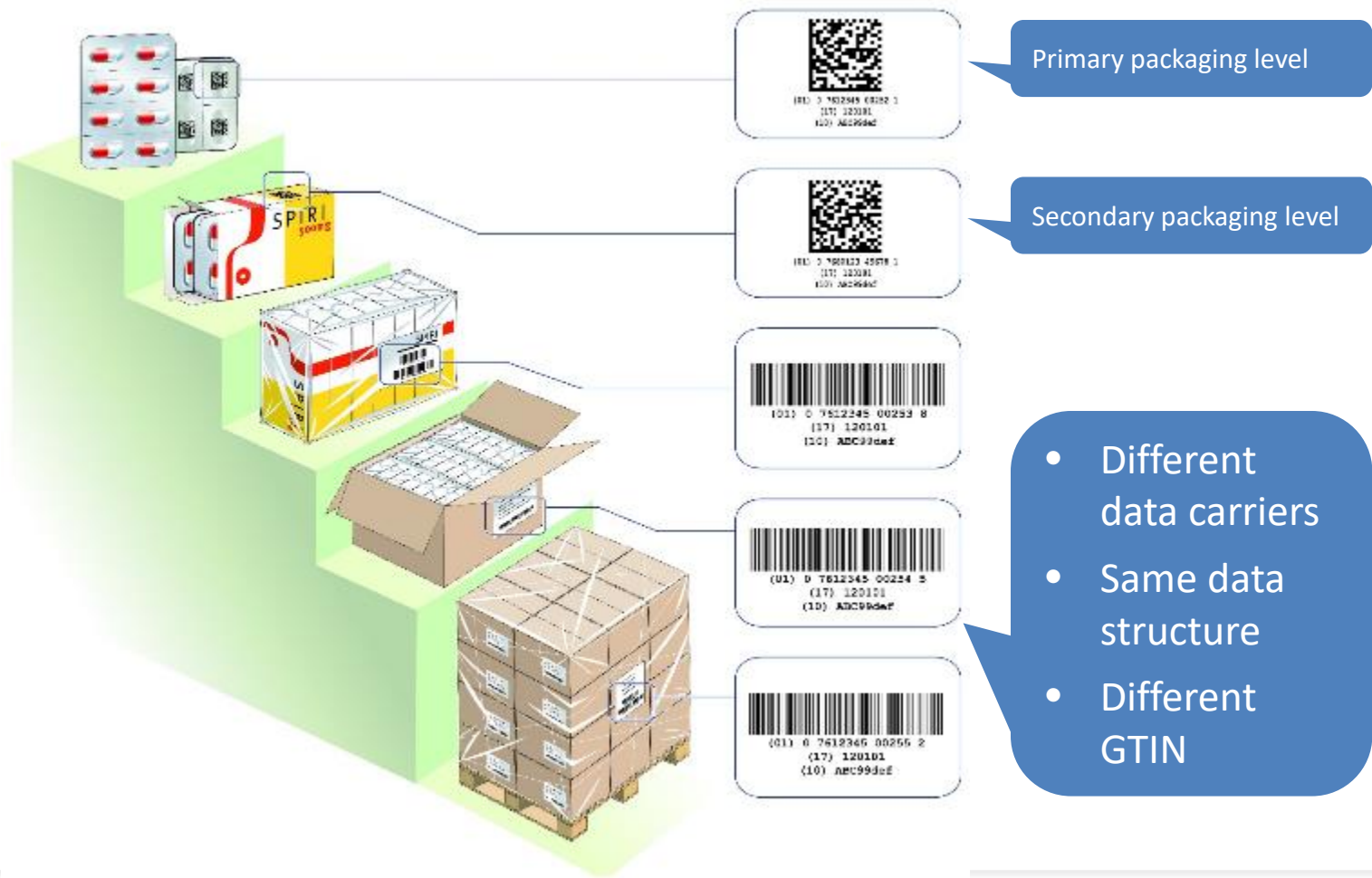
()~ah00010,C

()~hd00005,C

The good and the bad...



Product hierarchy



Why is product identification better when standardised?

- *Global uniqueness is safer*
- *If products do not leave the organisation, is proprietary possible?*
- *It is not a priority to change these (proprietary) identifications since the system works and other developments are «more important»*

AN IDENTIFICATION STRATEGY

Boundaries

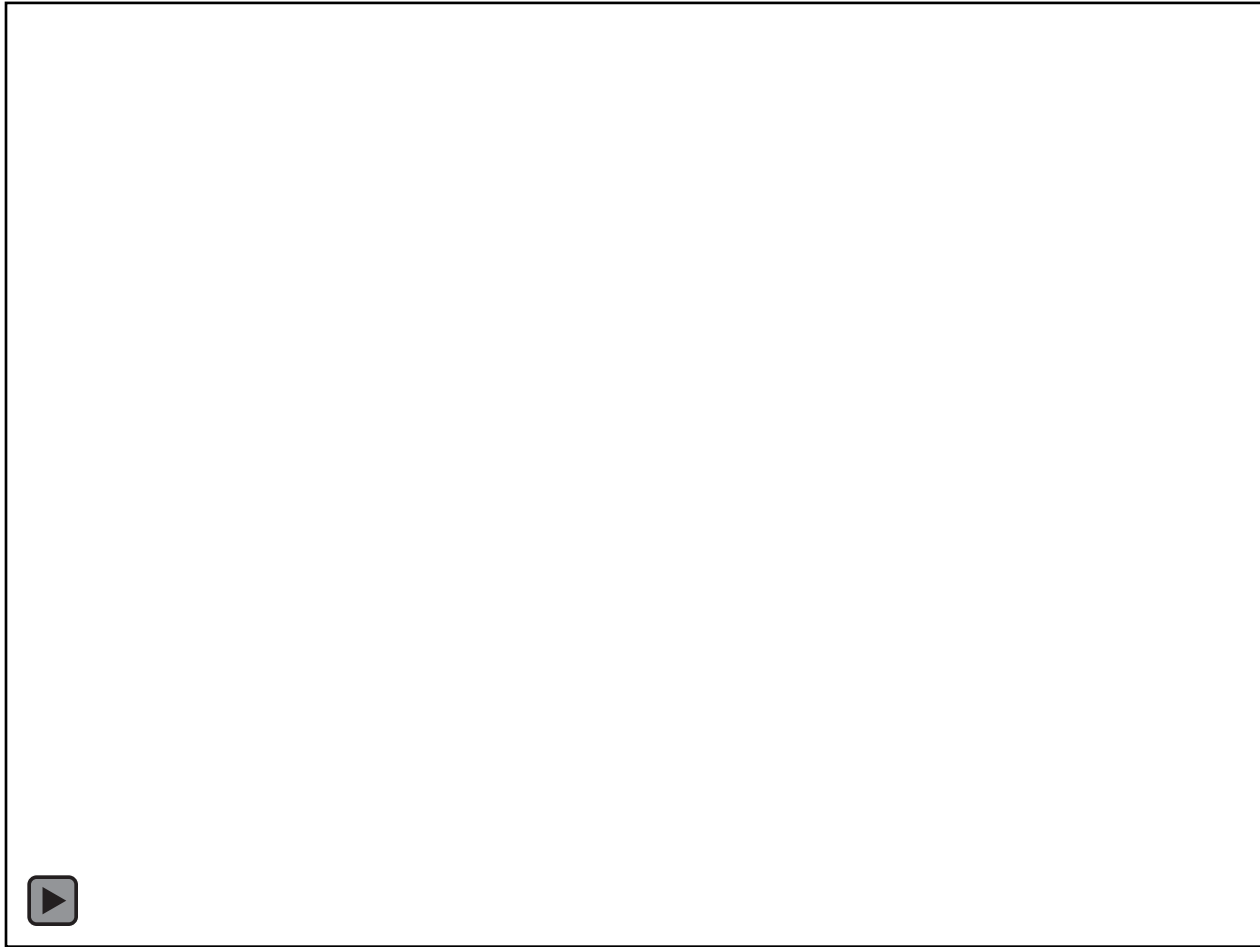
- ▶ Why (where) local identifiers
- ▶ Why global standard
- ▶ How to organise decentralised identification management

How to convince (who to convince)?

- ▶ *Decision makers – stakeholders – kings*
- ▶ *Those who are preparing new IT requirements*
- ▶ *IT to understand where global identification makes sense, and how to implement (decentralised)*
- ▶ *...*

TAKE AWAY

Take away



Take away

- ▶ Identification is a strategic decision
- ▶ Impacting in the mid- to long term
- ▶ No compromise with the standard – the bricks will fit together if properly used
- ▶ Every re-engineering is an opportunity to add a brick of standard
- ▶ End-goal is:
 - ▶ Traceability,
 - ▶ Increased safety
 - ▶ Increased efficiency

What are suppliers doing...



Contact



Christian Hay
Partner, Medinorma LLC

Tel +41 21 825 32 19
Mob +41 76 369 10 54
hay@medinorma.ch